



# ANOKIJIG ARROWHEAD

## Spring 2024



### Bricks and Mortar

Darin Holden, Executive Director

As I sit in my Western Lodge office, we are finishing up training for our 60 Sr Staff and preparing to welcome nearly 200 Jr Staff for their training week. All the while, 3,000 kids are getting out of school and chomping at the bit to be back at Camp. The next Anokijig summer is upon us...and it feels great!

It's been a while since we've been able to get a newsletter to you. December of 2019, to be exact. Four and a half years...it seems like eons. My last letter was full of great news of our thriving camp, new and improved facilities, and the promise to build "a bridge to the future" in 2020. I wrote, "Change at Anokijig happens very slowly, and then all of a sudden; however, always with a respect and reverence that doesn't forget the old while welcoming the opportunities of the new." Reflecting on our recent past, that statement stands truer than ever. Perhaps even more starkly.

Along with the rest of the world, we struggled through the pandemic. However, where many other camps closed for those couple years (some for good), the leadership and staff of Anokijig chose to find a way to continue serving our shared mission. Giving kids summer camp in 2020 was what THEY needed most. It was our duty. With a complete overhaul of our program, policies, and in some cases physical space, the Spirit of Anokijig drove us through those years. We served thousands of kids.

During that time, we adopted a song called "Weather the Storm."

*It's not how long the rain falls, Or how hard the wind blows, Or how deep is the snow in the road, Nor the balance we fake when we feel the ground shake, And we think that our world will explode. ...It's the help that we give. It's the love that we live. It's our pride in the friendships we form. It's the courage we show facing things we don't know. It's the way that we weather the storm.*

For the last 99 years - through depressions, wars, epidemics, and the sale of camp - the Anokijig staff, campers, alumni, and donors heard the call and responded to help us weather the storm, ultimately living our motto of "We Serve." Thank you to you all!!!

Having survived those tough times, I sit in Ray Vance's office and wonder how he would feel today. Our summer staff is fully hired, camper sessions are full (with waiting lists), and out my window, workers are shingling an amazing addition to Camp, Centennial Lodge.

Centennial Lodge is a physical representation of the new growth and service Anokijig can give as we move into our next century. I'd bet Ray Vance felt much the same as I do now when Western Lodge was carved out of the old mess hall hill in 1946. This building will be another step to make Anokijig better for all those who call it home. I believe Ray would be incredibly proud of all the people that have embraced his dream of providing a place where kids can learn by living positive values under the guidance of positive role models while having outrageous fun. No better way to develop a kid into a positive, caring adult.

Ray and his team from the Optimist Club of Racine put their vision into action in May of 1926 by starting this place we call Anokijig. Centennial Lodge might be the physical representation of a "bridge to the future," but it is all of us that are the bricks and mortar. It takes each brick to do its small part for a building to stand strong. It is all of our jobs to help the Anokijig mission stay strong by continuing to steward this extraordinary place into its next century and beyond.

As we move into our 99th season, you'll be hearing more about the opening of Centennial Lodge and the celebration of Anokijig's 100 year anniversary. Watch our website, your email, and social media to catch the news and learn how you can help bolster Anokijig into the future.

For now, enjoy the news we could fit here, and start to plan your next visit to Anokijig so you can see the fun, the changes, and feel the Camp spirit again for yourself. RIC TIC.



## In This Issue:

- ▶ **Bricks & Mortar**
- ▶ **Centennial Lodge**
- ▶ **Looking for Tomorrow**
  - ★ Match Campaign
  - 1926 Giving Society
- ▶ **Program Updates**
  - A Year of Change
  - Did You Know?
- ▶ **The Buzz**
- ▶ **Western Lodge History**
- ▶ **Catch the Camp Spirit**
  - On the Horizon
  - 2025 Summer Camp
  - Looking to Volunteer?
  - YOUR News HERE!
- ▶ **Ric Tic!**
  - Calendar Dates
  - Contact Us



Centennial Lodge is coming!

For the first time in more than 80 years, Camp Anokijig has broken ground on a major facility. Located adjacent to Western Lodge, Centennial Lodge will create new opportunities for the Anokijig family.

- **Camper safety:** Located in Centennial Lodge's basement, the secure storm shelter will have ample space for more than 475 campers and staff to quickly get to safety during severe weather.
- **Upgraded health & wellness:** Built in 1953, the current Health Lodge was originally constructed to serve 190 campers and staff. The expanded and modernized health & wellness facilities will support the current needs of our growing camper population.
- **Year-round programming:** Centennial Lodge not only creates indoor programming space for a rainy summer day, but also adds winterized spaces, creating opportunities for additional fall and winter groups, corporate gatherings, family events, and much more.
- **Program development:** Collaborative space for staff will allow our full-time team to devote all of their energy to improving the camper experience by the elimination of moving temporary offices twice a year.

Centennial Lodge is a significant investment of the time, talent and financial support of our Camp Anokijig family. Thank you so much for everyone that has helped to support this project.



Follow along with updates at  
[www.anokijig.com/centennial](http://www.anokijig.com/centennial)

**FUNDRAISING IS ONGOING TO  
COMPLETE THIS PROJECT**

To find out how you can help,  
contact Allison Scherer at  
[allisons@anokijig.net](mailto:allisons@anokijig.net)  
or 920-893-0782.



Centennial Lodge Rendering



Breaking Ground - September 23, 2023



June 11, 2024



Centennial & Western Lodge Rendering



# Spring 2024

## Looking for Tomorrow

### Double the Dollars, Double the Impact

We are in our final fundraising push for Centennial Lodge.

As we push to raise critical financial support to complete this project, we are grateful for an amazing fundraising opportunity.

Several friends of Camp Anokijig have generously agreed to a \$1-for-\$1 match for every contribution you make to support Centennial Lodge, up to \$45,000! The match will close Sept 21, 2024.



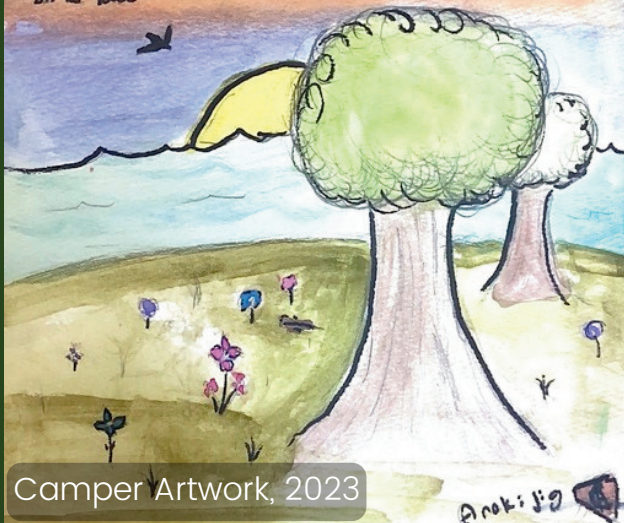
Now is your chance to double your impact!  
Donate online today at [www.anokijig.com/future](http://www.anokijig.com/future),  
or fill out the return slip at page bottom.

Thank you for your generous support!



"And together we'll live  
life out on the loose."

"And together we'll  
live life out  
on the loose"



Camper Artwork, 2023

### 1926 Giving Society

In 2022, we debuted our first ever giving circle at Camp Anokijig. In honor of our founding year, the 1926 Giving Society acknowledges major gift donors who have given over \$1,926 in a year.

Last August, we hosted our second 1926 Giving Society Gathering on the shores of Little Elkhart Lake, framed by a classic Anokijig sunset.

Thank you to all our Society Members for your incredible support and interest in our mission. We look forward to future events celebrating this pivotal group of Anokijig supporters!

*How do I become a member?*

*Donate a cumulative total over \$1,926 to Camp Anokijig in a given year. Membership is renewed annually.*

To donate: [www.anokijig.com/donate](http://www.anokijig.com/donate)

Double the Dollars,  
Double the Impact

Double your  
donation by  
Sept 21!

☐ My check is enclosed

**OR** Charge my credit card:

☐ MasterCard ☐ Visa ☐ Discover ☐ AmEx

Please accept my gift of:

- ☐ \$25
- ☐ \$50
- ☐ \$100
- ☐ \$250
- ☐ \$500
- ☐ Other \_\_\_\_\_

Please return to Camp Anokijig, W5639 Anokijig Lane, Plymouth, WI 53073

Camp Anokijig is owned and operated by the Friends of Camp Anokijig,

a 501(c)3 Not for Profit Corporation, making your gifts tax deductible to the full extent of the law.

Email

Credit Card no.

Exp. Date

Security Code

# A Year of Change

Hannah Wisman, Camp Director

For those of you I have not yet had the privilege to meet, my name is Hannah Wisman. While I have a long history with Anokijig, I started in my current role as Camp Director just over a year ago (and before you ask, Yes, Darin is still around and kicking as our Executive Director!). I hope to connect on a more regular basis now that I have my feet under me in my new role here.

Each summer at Anokijig, a new page turns, welcoming a new set of staff, volunteers, campers, and new generations embracing Anokijig as their own. This past year has also been a year of change for our full time staff. As we turn the next page, we welcome new and familiar faces in our full time team, taking up the mantle.

Our Program Director team welcomes two new team members: Lily Pykett and Samantha Hoppe. Lily has worked at Anokijig in multiple roles over the past years including Senior Staff, Development Assistant, and Assistant Camp Director for summer camp. Samantha Hoppe comes with years of experience as a teacher and management of a non-profit for youth. Sam and Lily join Claude Gonzales, Jessica Dillingham, and Calvin Chaffee as Anokijig's Program Directors.

Richard Doubek, formerly our Custodian/Maintenance Assistant, has shifted into a brand new role as Assistant Food Service Director, where he will put his passion of cooking and knowledge of foods and dietary needs to use. Filling in where Richard left off, Donovan Kehoe has stepped into the Custodian/Maintenance Assistant position. Donovan comes to Anokijig with custodial experience in a school district.

*Richard Doubek (left), Sam Hoppe & Donovan Kehoe (right)*

The last change is a celebration of 17 years of service at Anokijig. Carol Leannah, our phenomenal office manager, retired as of the end of March 2024. I imagine most everyone reading this newsletter interacted with Carol in some capacity, and we can all attest to just how much Carol has made Anokijig a better place both personally and professionally. We could not be happier for Carol and cannot wait to see how she fills her time in retirement! Mary Burbach Manager and hit the ground running. Mary comes to Anokijig banquet hall as well as a Boys and Girls Club.

I personally strive to meet change as an opportunity and a challenge to continually improve ourselves, our programming, and to ensure Anokijig continues to stand on a foundation based solidly in our mission. As with many generations before us, this full-time team, both new and familiar, will continue to step forward and carry the Spirit of Anokijig. Please join me in welcoming the new faces as we dive into another remarkable summer at Anokijig!

## Did You Know?

Anokijig currently boasts **22** programs available for morning skills at summer camp:

Advanced Archery, Adventure Challenge, Aquatics, Archery, Arts & Crafts, Dance, Digital Photo, Drama, Field Riots, Fishing, Landgames, Medieval Archery, Nature, Paddlesports, Ranch, Red Swimming, Riflery, Sailing, Trailcrafts, Ukulele Band, Windsurfing, Woodworking



### New Construction

Besides Centennial Lodge, we have added several structures around Camp to improve programming. Come visit to see!

- Arts and Crafts Covered Deck
- Apiary Observation Deck built by Sargento Engineering Dept volunteers



A&C Deck on Tie Dye Tuesday



Screened Apiary Deck and bee hives

### Programming

The Corral welcomed 13 new horses the past 2 years: Ember, Pip, Tiny, Faith, Cash, Anna, Sweetwater, Laredo, Ruby, Charlie, Twitch, Igor, and Lance. Throw on your boots and come on down to meet them!

Our corral has been getting regular visits from a local horse trainer. With all our new horses, and some of the old ones, we brought in a little extra help to get them camper ready.

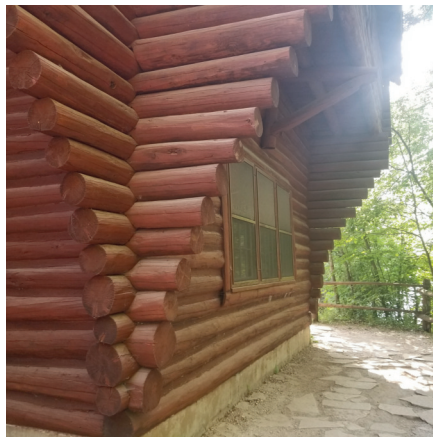
Medieval Archery worked out of a trailer for too long. You'll now see a new shed in Lower Victory dedicated to Medieval Archery storage.



Campers this year will notice a new addition to our tents. Most of our platform tents now sport 4 ft high wooden barriers around 3 sides of the platform. Safety first!

### Western Lodge

Western Lodge is looking shiny and new this summer! Last year, through a very meticulous method, testing many processes before proceeding, we stripped the old stain from the 70's and gave the lodge a new coat. She's looking better than ever!



Western is sporting all new screens on its windows, thanks to longtime Anokijig friends, the Leannah's!

### Behind the Scenes

Wifi is an on-going battle. Camp is in the bottom of a kettle that provides some beautiful scenery while wreaking havoc on internet connections. Thanks to program director Calvin Chaffee, we are connecting more successfully than ever before!

Camp runs an extensive hay operation. Thanks to the support of the Marjorie Christiansen Foundation, we're rocking a new skidsteer with attachments, 5 hay feeders, and 1 hay spear to help that effort. We also have new water lines to several pastures, and all new fencing at our "Sanders" property.



Our program team has had their offices in a construction trailer for a few years now. But this spring, we added a second trailer next-door. The second trailer will act as temporary office space for our business and development teams. It's a bit squishy, but no less welcoming!

Our office is in the process of finalizing a new database and eventual website. Along with that, we've started collecting paperwork digitally, sparing our office months of filing and data entry. Thank you all for your patience as we find and fix all the kinks in our new system.

### Other

New computer monitors  
New boats  
More bees/hives at our Apiary  
2 run-in sheds  
16 new saddles  
Brush mower  
Posthole auger  
A new suburban  
4 new Western Lodge furnaces  
And so much more!!





It is always a treasure to be able to peek into the history of Anokijig, especially when it comes to some of our more iconic buildings and programs.

These amazing photos are a small selection of an album sent to us from John Voigt. You may recognize that name from buildings around Camp. A big thanks to John for sharing these great snapshots of Anokijig history.

Journey with us back to 1946, when Western Lodge was just an idea. At that time, the main "mess hall" was a hodge podge of expansions and additions called Optimist Lodge. Camp had outgrown the lodge several times, and they were once again splitting at the seams. It was time for the next phase of Anokijig history.



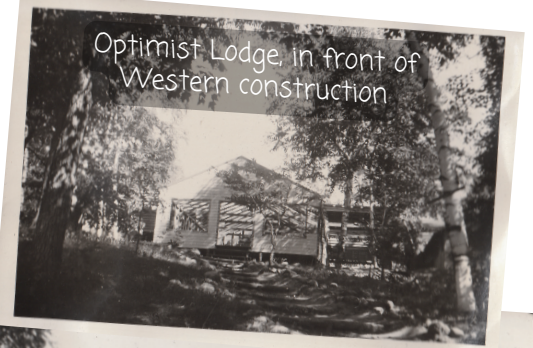
Ray Vance, the Executive Director, coordinated hiring a team of lumberjacks who stayed and worked at Anokijig all summer. Campers helped ferry the giant logs up the hill. Log by log, Western Lodge took shape.

Fun fact: Space for Western was actually dug out of the hill behind the old mess hall. Vesper hill actually extended all the way to Optimist lodge. Note the man walking on a plank from the hill onto the roof in the photo to the right. The dirt removed became the base of the future Health lodge.

Enjoy these astounding photos taken during 1947 and 1948, as Western Lodge took shape. A peek into Camp history!

To see more of the photos sent by the Voigt family, visit <https://lp.constantcontactpages.com/cu/qRWEA8Z/western>

or scan the QR code below with your phone's camera:



### On the Horizon

These are a few of the other projects on the horizon at Camp Anokijig:



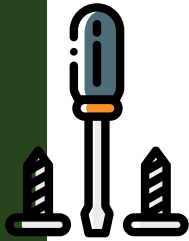
An important part of what we do is our vehicle fleet. 2 buses, 3 suburbans, 1 4x4 (Caddy), 5 golf carts, 2 ATV's, 3 tractors, 1 flat bed truck, 2 pick up trucks, etc.. With all the use they get, there is a lot of maintenance required. We're partially funded to outfit one of our onsite garages with a lift, allowing our talented maintenance crew to do more of the maintenance in-house safely.

Goal: \$33,000

Raised: \$10,000

Thanks to a host of wonderful donors, we will be replacing the tent over the Archery range with a permanent roof. Construction is planned for this fall. Look forward to the construction photos!

Fully Funded



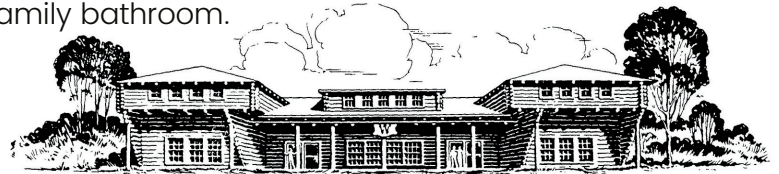
Our Woodworking program area will be getting a permanent roof of its own. Construction is unscheduled as of yet, but the hope is next spring. Woodworking enthusiasts can look forward to a much improved experience!

Fully Funded

Western Lodge will be getting some extra attention. Resurfacing the exterior was just the beginning. Refurbishing the entry space and walkway, rebuilding and refinishing doors and adding a deck outside the main entry will build on Western's welcoming nature and help it withstand future Wisconsin winters. Interior improvements will include reconfigured office space, an expanded pantry, and a new family bathroom.

Goal: \$255,000

Raised: \$125,000



### Summer Camp Registration

2025 summer camp registration will open at the end of this year. Watch our social media and your email inbox for the launch. Summer camp spots fill faster every year!

### Looking to Volunteer?

Looking for a volunteer opportunity? Reach out to our office today, and see how you can help at Anokijig. [anokijig@anokijig.net](mailto:anokijig@anokijig.net) | (920) 893-0782

### Exciting News to Share?

We want to hear about it! New job? Newly married? New kiddos in the family? Won a award? Let us know, and we'll share with the rest of the Anokijig community.



Camper Artwork, 2023



# Spring 2024

## Ric Tic!

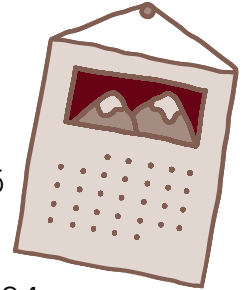


### Annual Report

Our 2023 annual report is viewable by scanning the QR code or visiting [www.anokijig.com/donate](http://www.anokijig.com/donate)

### Calendar Dates

Laughter in the Woods - Sept 21, 2024  
GivingTuesday - Dec 3, 2024  
Tube-a-thon - Feb 21-23, 2025  
Alumni Family Weekend - May 9-11, 2025



### Family Camp

Memorial Day Weekend - May 24-27, 2024  
Labor Day Weekend - Aug 30-Sept 2, 2024  
Fall Colors - Oct 4-6, 2024

### Summer Camp

Last Day of Camp - Aug 17, 2024

### Keep in Touch

[www.anokijig.com](http://www.anokijig.com)  
[anokijig@anokijig.net](mailto:anokijig@anokijig.net)  
(920) 893-0782



anokijig



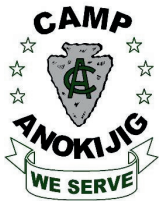
campanokijig



anokijig



campanokijig



Camp Anokijig  
W5639 Anokijig Ln  
Plymouth, WI 53073

[www.anokijig.com](http://www.anokijig.com)

NON-PROFIT ORG  
US POSTAGE  
PAID  
PLYMOUTH, WISCONSIN  
PERMIT NO. 245

## 2024 Spring Newsletter Centennial Lodge, the Future of Camp!

ADDRESS SERVICE REQUESTED

Especially for:

920-893-0782 | [www.anokijig.com](http://www.anokijig.com)